

# LUX H8 Install

On a 5-Series E60 LCI

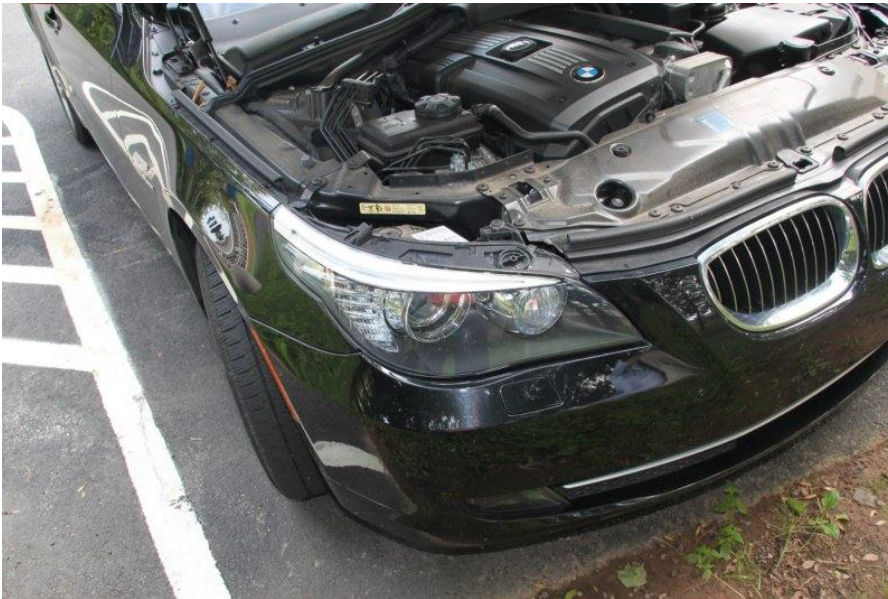
**Information:** Do this at your own risk

## Tools Needed:

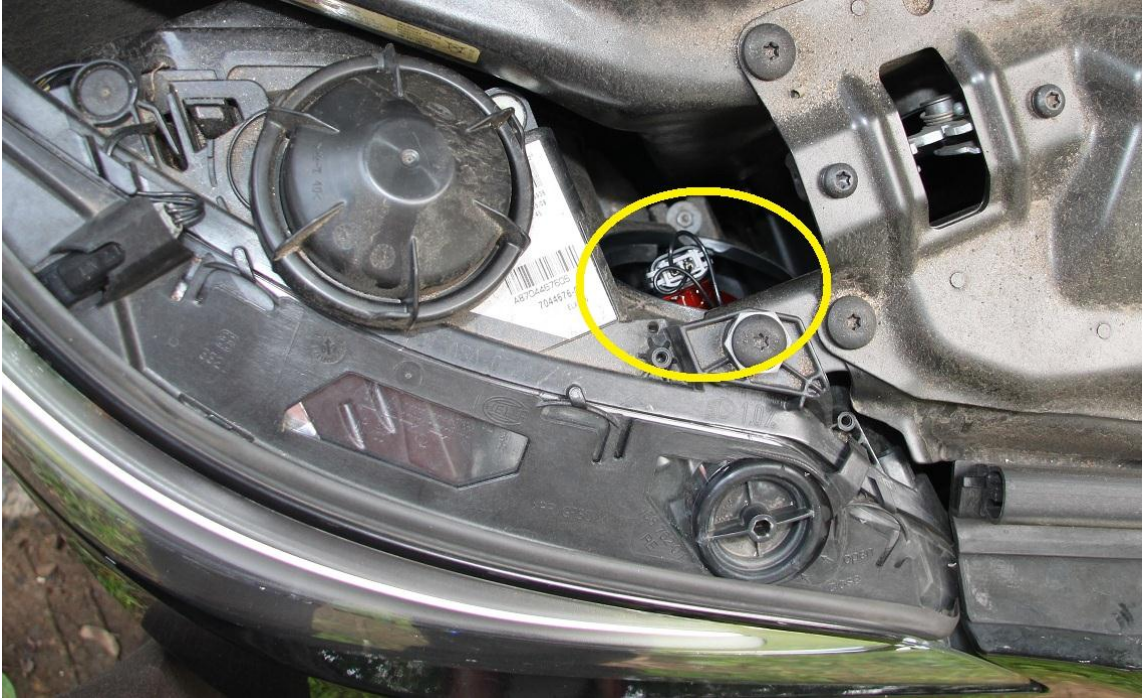
Standard (slotted) screw driver

## Installation:

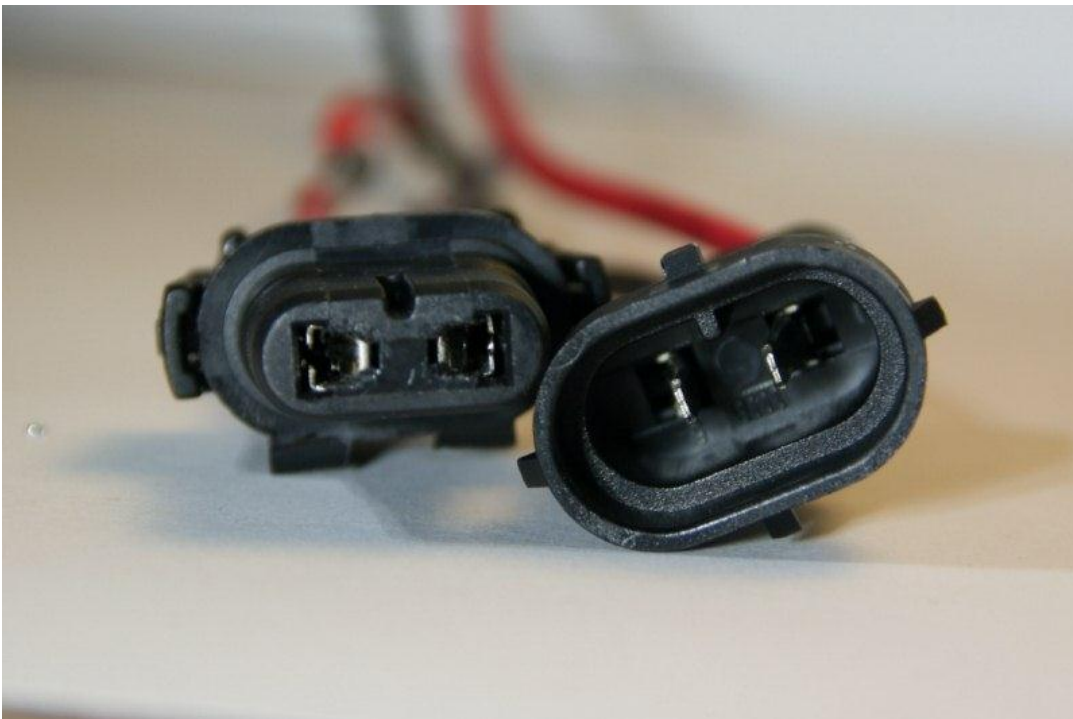
- Open the Hood
- On the back of each headlight is a round cover with fins, twist it to remove the cover.

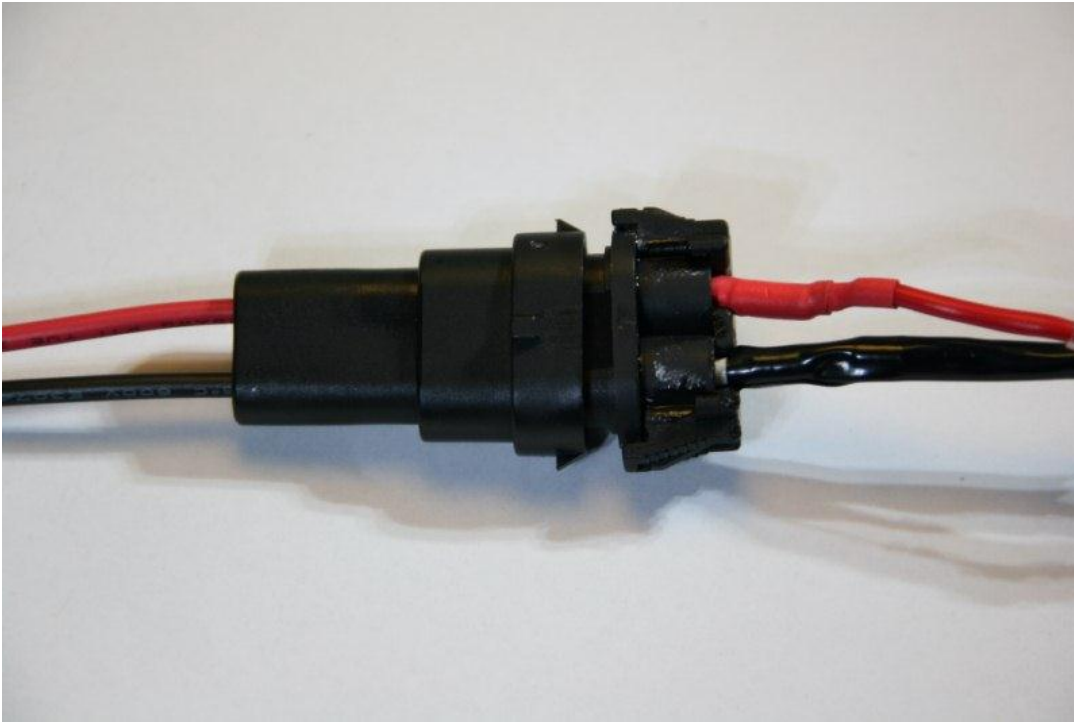


- Upon removing the cover, you will see the H8 bulb inserted into the headlight. Twist the H8 bulb counterclockwise to remove it. Take note of the 3 tabs, which will be used to help insert the LUX H8 Bulb.



- Once the H8 bulb is removed, unplug the bulb by gently pulling the outside tabs to release it.
- Next, connect the OEM connector to the LUX H8 connector as shown. Connect it with the inside tabs lining up.





- Insert the new **LUX H8** into the headlight, reversing the steps to remove the old bulb. You will need to twist it clockwise until it is firm. You will also need to tuck the wiring and black box into the headlight housing. There is plenty of room for a nice comfortable fit. See installation tips at the end of this guide.

### Install Tip:

- When inserting the **LUX H8**, there are 3 tabs that need to line up. The 3 tabs form a shape of a “T”. It is helpful to use a marker and put a line or arrow on the base of the LUX unit to figure out which direction is top. This will save you time in installing the unit.
- You can also guide the new **LUX H8** in by looking at it from the outside as shown. Notice how the tabs have rotated into their locked position.
- Note: the LUX H8 may not twist fully into place and it was designed this way.

